



CONNECTICUT

Soft Landing Directory of Resources

VERSION 2 | 2023

SUPPORTED BY **ADVANCECT** MEMBERS

VISIT

advanect.org

FOLLOW



CONTACT

470 JAMES STREET, SUITE 9
NEW HAVEN, CT 06513

(860) 571-7136

ADVANCECT MEMBERS WITH RELEVANT MARKET ENTRY SERVICES

PROFESSIONAL SERVICES



CLA exists to create opportunities for our clients, our people, and our communities through our industry-focused advisory, digital, audit, tax, and outsourcing services.

ROBERT CAPPELLUCCI 860-467-9008

INSURANCE



Cambridge Insurance Advisors offers a variety of personal insurance, employee benefits, and business insurance solutions backed by 32+ years of experience. Cambridge offers a variety of coverage solutions from top-rated insurance companies.

SHAUN GAGNON 203-253-4226

BANKING



Webster provides fast and easy banking with better checking and savings, smarter financing, and more ways to help you build your nest egg. Webster believes that your bank should make you feel like it cares about more than just your money, and reveal its character in times of adversity.

CUSTOMER SERVICE 800-325-2424

LAW FIRM



Pullman & Comley is a full-service law firm with Connecticut offices in Hartford, Bridgeport, Waterbury and Westport. Practice areas include corporate and business, public and private finance, state tax, real estate and land use, environmental law, energy, and labor and employment.

MICHAEL J. ANDREANA 203-330-2235

INSURANCE



The Hartford is a leader in property and casualty insurance, group benefits and mutual funds. With more than 200 years of expertise, The Hartford is widely recognized for its service excellence, sustainability practices, trust and integrity.

SARAH MORIN 860-547-2320

INFORMATION TECHNOLOGY



CGI is among the largest IT and business consulting services firms in the world. Through its range of business and technology services, CGI helps clients set their future course, adapt quickly to change, and create competitive advantage as digital leaders.

MARGARET PILIERE 609-789-3044

TAX & CONSULTING



Deloitte is a global professional services firm providing a wide range of audit, tax, consulting, and financial advisory services. Deloitte offers industry-specific expertise and solutions to drive organizational growth, enhance operational efficiency, and navigate regulatory complexities.

HARTFORD OFFICE 860-725-3000

CONNECTIVITY SERVICES



Charter Communications is a leading broadband connectivity company and cable operator serving more than 32 million customers in 41 states through its Spectrum brand. Charter offers a full range of residential and business services including Spectrum Internet, TV, Mobile, and Voice.

SPECTRUM CONTACT 855-366-7132

REAL ESTATE



RMS is an award-winning real estate development firm with a rapidly growing portfolio of distinctive, luxury properties. Through its partners, RMS offers ultra-stylish apartments, unique boutique hotels, and best-in-class townhomes.

STAMFORD OFFICE 203-968-2313

INFORMATION TECHNOLOGY

HCLTech

HCLTech delivers industry-leading capabilities to clients across all major verticals including Financial Services, Manufacturing, Technology and Services, Telecom and Media, Retail and CPG, Life Sciences and Healthcare and Public Services.

HCLTECH.COM

REAL ESTATE



The Hurley Group is a real estate development and property management firm that specializes in properties throughout New Haven and Fairfield counties. Their portfolio includes commercial and residential properties, each with its own unique personality and amenities.

NEW HAVEN OFFICE 203-848-6474

FINANCIAL SERVICES

J.P.Morgan

J.P. Morgan Chase & Co. is a leading global financial services firm with assets of \$2.4 trillion and operations worldwide. The firm is a leader in investment banking, financial services for small businesses, commercial banking, financial transaction processing, and asset management.

MATTHEW SEITZ 203-629-3192

REAL ESTATE



BLT provides housing programs to meet individual and business needs, including a Corporate Preferred Housing Program. BLT also offers single private offices, move-in ready pre-built space, and other built to suit options for your business needs now and in the future.

STAMFORD OFFICE 203-846-1900

INFORMATION TECHNOLOGY

Infosys

Infosys is a global leader in next-generation digital services and consulting. With over four decades of experience in managing the systems and workings of global enterprises, they expertly steer clients, in more than 56 countries, through their digital transformation.

INFOSYS.COM

ADVANCECT THANKS OUR PARTNERS

THANK YOU TO OUR BOARD OF DIRECTORS

Amphenol

Charter
COMMUNICATIONS

CONNCORP

Connecticut
Department of Economic and
Community Development

EVERSOURCE

Hartford Foundation
FOR PUBLIC GIVING
Together for good.

HCLTech

Infosys

OTIS

PHILIP MORRIS
INTERNATIONAL

Quinnipiac
UNIVERSITY

STAMFORD HEALTH

StanleyBlack&Decker

synchrony

UIL
UIL HOLDINGS CORPORATION

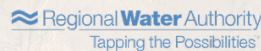
WebsterBank

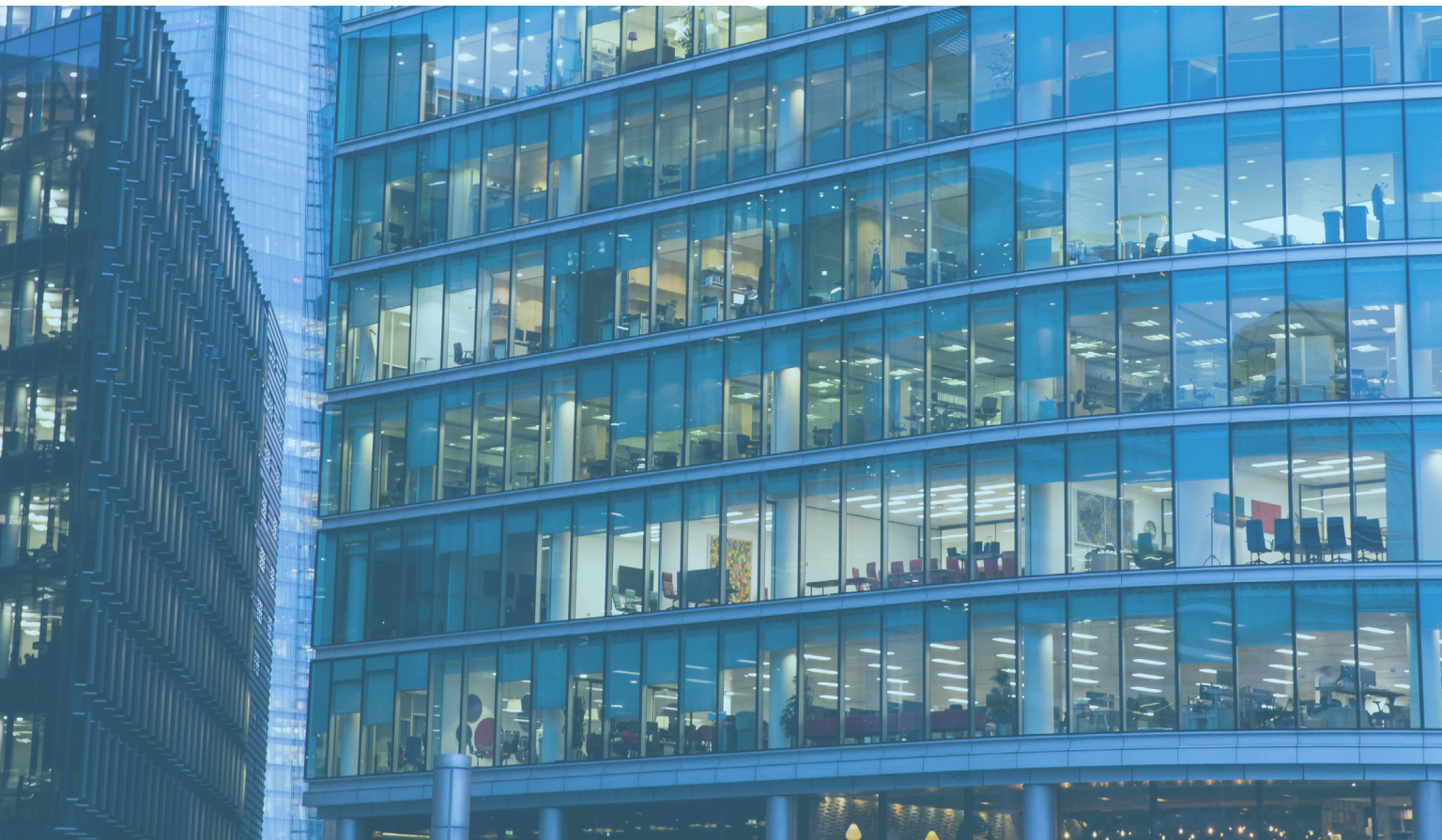
Yale

Yale SCHOOL OF
MANAGEMENT

Thank you to our member businesses and organizations for their support in advancing our goal of a more competitive Connecticut.

THANK YOU TO OUR MEMBERS





CONNECTICUT SOFT LANDING DIRECTORY OF RESOURCES

Provided by **ADVANCECT**

TABLE OF CONTENTS

Serviced Offices & Co-Working Spaces	8
Incubators & Accelerators	16
Corporate Apartments	20
Tax & Accounting Firms	26
Tech Consulting	30
Law Firms	32
Executive Search Firms	34
Staffing Firms	38
Industry Organizations	40
Life Science Assets	43
Small Business Registration	44
Commercial Real Estate	45
Counties & Cities Map	46

Serviced Offices & Co-Working Spaces

FAIRFIELD COUNTY

BRIDGEPORT



B:HIVE BRIDGEPORT

B:Hive Bridgeport is a shared workspace residing in a 90-year old converted bank. Their goal was to design spaces that truly support their community. B:Hive provides flexible and affordable memberships, premium amenities, and encouraging collaboration.

bhivebridgeport.com

AMENITIES

WiFi	Member App Lounges
24/7 Access	Board Room
Coffee & Snacks	Printer
Meeting Rooms	Storage
Cleaning	Member Discounts
Kitchen	

PRICING

Day Pass: \$25/day

Hot Desk: Starts \$250/month

Dedicated Desk: Starts \$450/month

Private Office: Starts \$999/month

DANBURY



DANBURY HACKERSPACE

The Danbury Hackerspace offers a dedicated quiet coworking room at the Innovation Center. There are dozens of restaurants within walking distance of the Innovation Center (and K's Cafe in our building), parks, stores, and more.

danburyhackerspace.com

AMENITIES

3D filament printers	Mockup Studio
Epilog Helix 50 Watt CO2 Laser	Program Space
Shopbot CNC Router	Coworking Space
Common Work Area	Bridgeport Milling Machine
Assorted Shop Tools	

PRICING

Parking: \$1 per hour or \$45 per month

Monthly Membership: \$50

Yearly Membership: \$500

Student Membership: \$25/month

DARIEN



HAYVN

Hayvn is a coworking facility catering to women entrepreneurs located in Darien, Connecticut. It was designed to create a space where women can come together, collaborate, and expand their business.

hayvn.com

AMENITIES

WiFi	Lounges
24/7 Access	Meeting Rooms
Kitchen	Print Services
Coffee & Snacks	Fitness Center
Mail Services	HR Benefits
Onsite IT Support	Podcast Room

PRICING

Day Pass: \$50/day | **Virtual:** \$50/month

Hot Desk: \$360/month

Dedicated Desk: \$650/month

Private Office: Starting \$1,050/month

GREENWICH



GSPACE

gSPACE offers private offices, coworking stations, and meeting rooms. Whether you need a private or shared space, a spot just for you, or your entire team, gSpace offers customizable memberships that will be precisely what your business needs.

gspace.us

AMENITIES

WiFi	Lounges
24/7 Access	Meeting Rooms
Kitchen	Print Services
Coffee & Snacks	Fitness Center
Mail Services	HR Benefits
Onsite IT Support	Podcast Room

PRICING

Day Pass: \$50/day

Virtual: \$50/month

Hot Desk: \$360/month

Dedicated Desk: \$650/month

Private Office: Starting \$1,050/month

NORWALK



NORWORX

Norworx is an innovative and friendly co-working environment for entrepreneurs, small businesses and enterprise companies.

norworx.com

AMENITIES

Closed Door Offices	Conference Rooms
24/7 Access	Printer
Coffee & Tea	Onsite Fitness Facility
WiFi & Ethernet	Free Parking
Mail Handling	Dry Cleaning
Business Address	Trash Pickup

PRICING

Day pass: \$19/day

Meeting rooms: \$17 - \$48/hour

Hot Desk: From \$160/year

Dedicated Desk: \$1,099/year

Private Offices: Starting at \$499/month

SHELTON



INDUSTRY CO-WORK

Industry Co-Work resides in the 147,000 sq. ft. historic Conti Building in downtown Shelton, Connecticut. The building houses over 30 businesses, all of which provide discounts to Industry's members.

415howeave.spaces.nexus.com/en

AMENITIES

WiFi	Printer
24/7 Access	Parking
Kitchen	Workshops
Coffee	Member Discounts
Lounges	
Meeting Rooms	

PRICING

Day Pass: \$15/day

Hot Desk: \$75/month

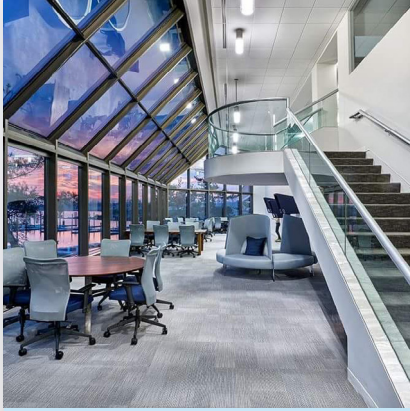
Small Private Office: \$350/month

Large Private Office: Starting \$600/month

Serviced Offices & Co-Working Spaces

FAIRFIELD COUNTY

STAMFORD



WORKPOINT

Workpoint is a 15,000 sq. ft. waterfront coworking facility that offers high-end amenities, coworking spaces, state-of-the-art technology, a TV/media studio and event spaces for creatives, media professionals, financial professionals, and entrepreneurs.

workpoint-stamford.com

AMENITIES

WiFi	Meeting Rooms
24/7 Access	Military-Grade IT
Kitchen	TV/Media Studio
Coffee Bar	Printer
Mail Services	Train Station Shuttle
Lounges	

PRICING

Day Pass: \$25/day

Hot Desk: \$300/month

Dedicated Desk: \$600/month

Private Office: \$1,800-\$3,150/month

STAMFORD



OFFICE EVOLUTION

Office Evolution Stamford offers modern executive offices, conference rooms, a business lounge, virtual memberships, receptionist/telephone answering, and unlimited Starbucks coffee. They help enhance your business by providing the resources and opportunities you need to succeed.

officeevolution.com/locations/stamford

AMENITIES

WiFi	Business Community
24/7 Access	Lounges
Kitchen	Training Room
Onsite Cafe	Meeting Rooms
National Network	Fitness Center
Mail Services	Printer

PRICING

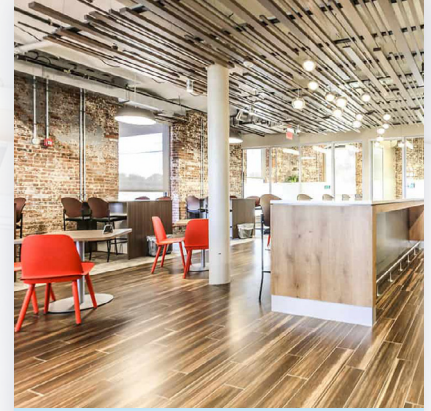
Hot Desk: Starting \$199/month

Dedicated Desk: Starting \$499/month

Virtual Office: Starting \$99/month

Private Office: Contact Office Evolution directly for pricing.

STAMFORD



SERENDIPITY LABS

SECOND LOCATION IN WESTPORT

Serendipity Labs is a nationally known coworking facility with two Connecticut locations. Each of these locations offer private offices, shared workspaces, team rooms, meeting rooms, collaboration studios, and work bars.

serendipitylabs.com

AMENITIES

WiFi	Mail Services
24/7 Keycard Access	Lounges
Onsite Staff	Meeting Rooms
Kitchen	Printer
Coffee	
Snacks	

PRICING

Day pass: \$49 | **Virtual Office:** \$99/Month

Hot Desk: \$349/month

Dedicated desk: \$720/month

Team room: Starts \$1,580/month

HARTFORD COUNTY

TRUMBULL



JEFF WORKS

Jeff Works is a new, affordable coworking space for remote workers. The workspaces are designed to counter the specific challenges faced by today's remote workers, providing a worry- and distraction-free environment with optional private rooms for rent.

jeff.com/info/trumbull

AMENITIES

Coffee & Tea	Meeting Rooms
High-Speed Internet	Phone Booths
Printing	Guest Passes
Business Address	
White Boards	
TVs/Monitors	

PRICING

Day Pass: \$19/day

Meeting Rooms: \$17 - \$48/hour

Hot Desk: From \$160/year

Dedicated Desk: \$1,099/year

Private Offices: Starting at \$499/month

HARTFORD



THE 224 ECOSPACE

The 224 EcoSpace is a 30,000 sq. ft. coworking facility, art gallery, banquet hall, and dance studio. Their Business Growth Centre was designed to support their community's entrepreneurs with coworking office space and business development resources.

the224.org

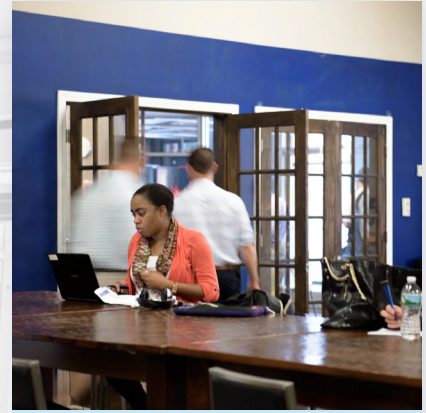
AMENITIES

WiFi	Lounges
Temp & Permanent Desks	Meeting Rooms
Cafe & Coffee	Printer
Mail Services	Leadership Library
Storage	Fitness Programs
	Parking

PRICING

Contact The 224 directly for pricing.

HARTFORD



RESET

reSET offers a unique coworking space just outside of downtown Hartford. Members have access to office space, Impact Accelerator program, food incubator, internship program, mentor network, and much more.

resetco.org

AMENITIES

WiFi	Impact Accelerator Program
24/7 Access	Workshops
Kitchen	Meeting Rooms
Coffee	Event Space
Office Supplies	Member Discounts
Lounges	

PRICING

Contact reSET directly for pricing.

Serviced Offices & Co-Working Spaces

HARTFORD COUNTY

HARTFORD



UPWARD

Upward is a coworking hub and a co-living space in Hartford, Connecticut. With three floors and over 34,000 sq. ft., this large facility has unique open and private workspaces that will inspire your productivity.

moveupward.city/hartford

AMENITIES

- WiFi
- 24/7 Access
- Kitchen
- Coffee & Snacks
- Mail Services
- Member Discounts
- Lounges
- Meeting Rooms
- Whiteboards
- Printer
- Parking & Bike Rack

PRICING

- Nights & Weekends:** Starting \$150/month
- Hot Desk:** Starting \$299/month
- Dedicated Desk:** Starting \$399/month
- Private Office:** Starting \$999/month

MANCHESTER



WORK_SPACE

WORK_SPACE is a collaborative coworking space and meeting center in the heart of downtown Manchester Connecticut. Along with flexible and affordable memberships, WORK_SPACE provides professional development resources that help achieve members' goals.

workspacemanchester.com

AMENITIES

- WiFi
- 24/7 Access
- Kitchen
- Coffee
- Lockers
- Mail Services
- Onsite Staff
- Lounges
- Meeting Rooms
- Printer
- Member Discounts

PRICING

- Day Pass:** \$20/month
- Student Coworker:** \$50/month
- Hot Desk:** \$125/month
- Dedicated Desk:** \$200/month
- Private Office:** \$550-950/month

WEST HARTFORD



WEST HARTFORD COWORKING

West Hartford CoWorking is a shared office space offering flexible monthly coworking memberships. Partnered with The Small Business Collective, this facility provides valuable services to its community of entrepreneurs, startups, and small businesses.

westhartfordcoworking.com

AMENITIES

- WiFi
- 24/7 Access
- Kitchen
- Coffee
- Snacks
- Phone Booths
- Lounges
- Meeting Rooms
- Printer
- Parking
- Event Spaces

PRICING

- Day Pass:** \$20/day | **5 day Pass:** \$50/month
- 8 day Pass:** \$99/month
- 12 day Pass:** \$159/month
- Dedicated Desk:** \$325/month
- Private Office:** Starting \$750/month

MIDDLESEX COUNTY

WEST HARTFORD



SPACES

Spaces is another internationally known coworking space provider. Their West Hartford location offers inspiring environments that help you grow your business alongside like-minded business professionals.

spacesworks.com

AMENITIES

WiFi	Parking
Receptionist	Outdoor Area
Fully Furnished	Networking Events
Coffee	
Gym	
Breakout Areas	

PRICING

Coworking: Starting \$226/month
Dedicated Desk: Starting \$311/month
Private Office: Starting \$495/month

CROMWELL



OFFICEPLACE

OfficePlace is perfectly situated, 15 minutes from Hartford and 22 minutes to New Haven, with a Class-A office building and shared ownership/management team. In-house staff provide hosting, reception, maintenance and janitorial services.

officeplace.com

AMENITIES

Free Parking	Free WiFi
Onsite Cafe	Janitorial Services
Admin Services	
Meeting/Conference Rooms	
Print & Scan Services	

PRICING

Call OfficePlace directly for pricing.

MIDDLETOWN

the mews⁺

THE MEWS+

The MEWS+ is a great space to have day or week-long company meetings - the large open Zoom-room has a layout easily adjusted to accommodate up to 12 people, and the conference room with the smart TV can seat six to eight.

themewsplus.com/work

AMENITIES

High Speed Internet	Smart TV
Printer/Copier	
Coffee Maker	
Refrigerator	
Conference Rooms	
Open Zoom Room	

PRICING

Students: \$100/semester
Basic Access: \$100/month
Full Access: \$150/month

Serviced Offices & Co-Working Spaces

NEW HAVEN COUNTY

HAMDEN



WHITNEYVILLE CULTURAL COMMONS

All of the amenities you need for business overlooking gorgeous Lake Whitney in a quaint, historic setting. Perfect for entrepreneurs, telecommuters, students, and anyone looking for workspace outside of the traditional office.

whitneyvilleculturalcommons.org

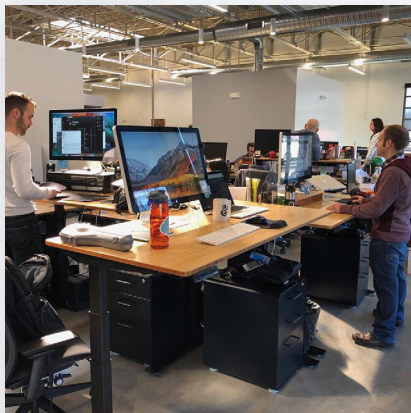
AMENITIES

- WiFi
- Refreshment Areas
- Mailing Address
- Lounge
- Flexible Hours
- Commercial Printing
- Meeting Rooms
- Personal Desks & Offices

PRICING

Call Whitneyville Cultural Commons directly for pricing.

NEW HAVEN



DISTRICT

An 18,000 sq. ft. coworking space at New Haven's technology and innovation campus, District Coworking provides flexible workspaces, dedicated desks, private offices, and meeting rooms.

districtnhv.com/cowork

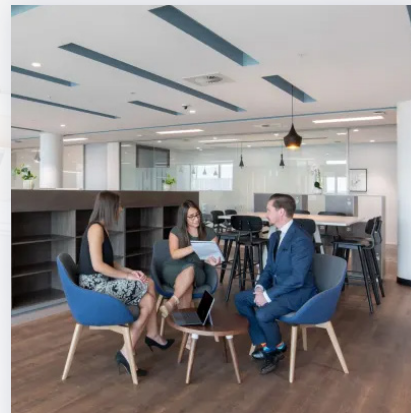
AMENITIES

- WiFi
- 24/7 Access
- Kitchen
- Coffee
- Snacks
- Mail Services
- Phone Booths
- Lounges
- Meeting Rooms
- Printer
- Fitness Center
- Bike-Sharing

PRICING

- Day Pass:** \$29/day
- Virtual:** \$49/month
- Hot Desk:** \$299/month
- Dedicated Desk:** \$399/month
- Private Office:** Starting \$550/month

NEW HAVEN



REGUS

LOCATED IN SHELTON, HARTFORD, STAMFORD, MIDDLETOWN, EAST BERLIN, ROCKY HILL, WEST HARTFORD, WINDSOR, BRIDGEPORT & NEW LONDON

Regus is one of the world's largest flexible workspace providers. They offer professional and inspiring work environments that fit businesses of all sizes and budgets.

regus.com

AMENITIES

- WiFi
- Reception
- Fully Furnished
- Onsite Coffee Bar
- Parking
- Outdoor Seating
- Video Conferencing

PRICING

Call Regus directly for pricing.

NEW LONDON COUNTY

NEW HAVEN



GNHCC CO-WORKING

The Chamber's Co-Working Concierge Service gives you the opportunity to present a professional image. You'll be able to meet with new and existing clients and collaborate in a professional, shared-space environment.

gnhcc.com

AMENITIES

WiFi	Educational Seminars
Mailing Address	Conference Room
Printing/Faxing/ Copying	Support System Of Fellow Chamber Members
Kitchen	Dedicated Phone Number
Coffee/Tea	

PRICING

Call GNHCC Co-Working directly for pricing.

WALLINGFORD



HUBCAP

HUBCAP offers incubator suites designed to help today's entrepreneurs, professionals, and start-ups take their business to the next level.

hubcapwallingford.org

AMENITIES

WiFi	Shared Resource Library
No Upfront Investment	Mailing Address, Conference Room
Administrative Support	Video Conferencing
Private Or Shared Work Space	After Hour Events
Printer/Scanner	

PRICING

Community Room: \$75/hour (\$350/day, 6-hour limit) + \$35 application fee

Conference Room: \$50/hour (\$175/day) + \$35 application fee

Incubator Office Space: \$375/month + \$125 application fee

NORWICH

FOUNDRY66

FOUNDRY 66

Foundry 66 is a shared office space located in Norwich, Connecticut. It is also one of the least expensive coworking facilities around - which allows its members to grow their businesses and save money at the same time.

foundry66.com

AMENITIES

WiFi	Smart Check-In
24/7 Access	Lounges
Kitchen	Meeting Rooms
Coffee	Printer
Snacks	Online Member Network
Mail Services	

PRICING

Day Pass: \$20/month | **Virtual Office:** \$99/month

Conference Member: \$120/month

Hot Desk: \$140/month

Dedicated Desk: Starting \$250/month

Private Office: Starting \$600/month

Incubators & Accelerators

ABCT HEALTH ACCELERATOR

ABCT is a six-month program of personalized entrepreneurial education delivered for first time founders of bioscience ventures of any development stage focused on healthcare innovation. Addresses individual needs and utilizes accredited entrepreneur coaches and expert mentors.

Bridgeport Accelerator Program ACCELERATOR

The Accelerator Program is 40 weeks long and includes a weekly Speaker Series with experts presenting on various topics ranging from branding to data security, financing, intellectual property, and much more. Each participating business is paired with a mentor

CCAT INCUBATOR

CCAT is an applied technology demonstration and training center that validates, demonstrates, and assists with the adoption of leading-edge technologies into global industrial companies and the advanced manufacturing supply chain.

Collab New Haven ACCELERATOR

Collab is an organization that aims to provide entrepreneurs with impactful, rigorous business support using a compassionate, fundamentally heart-centered approach. They focus on women and people of color with the belief that everyone should have access to entrepreneurship.

CTNEXT ACCELERATOR

CTNext provides direct assistance in terms of capital, mentorship, networking, and skills development. They also serve as a catalyst in the evolution of an "innovation ecosystem" - a community of entrepreneurs and a network of resources, programs, and institutions.

Fairfield County Makers Guild INCUBATOR/MAKERSPACE

The Makers' Guild is a non-profit, membership-based community workshop and fabrication studio that will provide access to specialized tools and equipment to enable its members to turn their ideas into reality.

Ferguson Library/Makerspace INCUBATOR/MAKERSPACE

The Makerspace is located in the Technology Center on the third floor of the DiMattia Building in downtown Stamford. All kinds of makers are welcome, whether they work with electronics, yarn, words, music, fabric, video cameras, computer code, colored pencils - almost anything.



ABCT

Branford
abct.co



UNIVERSITY OF BRIDGEPORT

Bridgeport
bridgeport.edu



Connecticut Center for
Advanced Technology, Inc.

East Hartford
ccat.us

COLLAB

New Haven
collabnewhaven.org



Rocky Hill
ctnext.com



Norwalk
fcmakers.com



Stamford
fergusonlibrary.org

Food N Bev Connect**FOOD ACCELERATOR**

A food accelerator that can help boost a new food business. They can help increase sales and distribution, and lead companies to better pivots by working with a team of mentors and experts.

**Danbury**

foodnbvect.com

HealthHavenHub**HEALTH ACCELERATOR**

A non-profit that provides programs and a global network to early and seed stage start-ups in downtown New Haven. Identifies, supports, and advances early stage healthcare technology companies.



HEALTH HAVEN HUB

New Haven

healthhavenhub.com

Hubcap Wallingford**INCUBATOR/COWORKING**

A hybrid-business incubator providing a unique opportunity for collaboration between schools and business to increase college and career readiness while expanding downtown Wallingford's business environment.

**Wallingford**

hubcapwallingford.org

Innovation Destination: Hartford (MHA Initiative)**ACCELERATOR**

An online portal to the Hartford Region's innovative entrepreneurial ecosystem. Learn about Hartford-area startups, second-stage companies, small business owners, and entrepreneurs. Find resources to start and grow a business.

**Hartford**

innovationhartford.com

Ives Squared**ACCELERATOR**

A center for innovation and collaboration at the main downtown library. Designed to inspire and augment the vibrant civic and entrepreneurial culture of the New Haven community with the Tinker Lab and the Exchange.

**New Haven**

nhfpl.org/ives-squared

MakerspaceCT**INCUBATOR/MAKERSPACE**

MakerspaceCT is a valuable community resource for everyone and a focal point for collaboration by businesses and individuals. It empowers you with Equipment, Community, and Education so that you can develop skills, make connections and launch ideas.

**Hartford**

makerspacect.com

MEWS+**ACCELERATOR/COWORKING**

The MEWS+ supports entrepreneurs from ideation to launch to scale. Often a lack of resources and connections make success seem out of reach for entrepreneurs. They help companies grow their business, build their network, and stay connected.

**Middletown**

themewsplus.com

Incubators & Accelerators

NERAC Incubator (UConn)

INCUBATOR

NERAC, through its long standing association with XcellR8 and UConn, is pleased to offer flexible office and workspace opportunities to early stage venture entrepreneurs for business incubation activities and support.



Tolland

nerac.com/the-nerac-incubator

NESIT

INCUBATOR

Offers a collaborative environment for people of all kinds to come together and build things. In addition to the makerspace itself, they foster creativity in the community with the Meriden public library, Boys and Girls Club, New Haven Green Expo, and other public institutions.



Meriden

nesit.org

New Haven IO

INCUBATOR

New Haven IO organizes events around business and technology, unites like-minded individuals, fosters a culture of creation, and creates a stronger tech and start-up minded community in New Haven.



New Haven

newhaven.io

Peter J. Werth Institute for Entrepreneurship and Innovation

INCUBATOR

Links the ecosystem of resources, programs, academic courses, funding, mentorship, education, and activities relating to entrepreneurship and innovation throughout the University. The institute brings together programs that foster entrepreneurship and innovation.



Storrs

entrepreneurship.uconn.edu

reSET

IMPACT ACCELERATOR

Works to advance the social enterprise sector through many entrepreneurial programs. All accepted participants are given access to reSET's coworking space, located in Hartford's Parkville neighborhood, to be used as a place of business during the program.



Hartford

resetco.org

Rippowam Labs

INCUBATOR

Rippowam Labs holds regular free classes on everything from computer/smartphone programming, electronics and robotics to knitting and sewing.



Stamford

rippowamlabs.org

TechXcel Stamford

ENTERPRISE ACCELERATOR

The objective of the TechXcel Stamford accelerator program is to prepare early stage B2B ventures for angel/seed funding, utilizing Silicon Valley Series A standards to create fully aligned funding documents.



Stamford

techxcelstamford.com

Thames River Innovation Space

ACCELERATOR

Thames River Innovation Place builds prosperity in the Thames River region through authentic innovation, collaboration, and diverse partnerships. Our group is an unprecedented alliance of public, private, and nonprofit sectors in the communities of New London and Groton.



Groton

thamesriverinnovation.org

ThinkSynergy

ACCELERATOR

We aren't consultants; we're synergists. Our services are designed to blend seamlessly into your existing processes to position your company for growth and we'll become an extension of your team.



Hartford

thinksynergy.net

UConn TIP

TECHNOLOGY INCUBATION PROGRAM

By coupling UConn's world-class research resources, facilities, and business support services to a network of experienced investors and entrepreneurs, UConn's technology incubation program helps launch startups ready to transform their respective markets.



Storrs, Farmington, Stamford

innovation.uconn.edu

Corporate Apartments

FAIRFIELD COUNTY

BETHEL

Copper Square

ADDRESS

10 Copper Square Drive
Bethel, CT, 06801

CONTACT

203-207-0900

Simeon Village

ADDRESS

28 Simeon Rd
Bethel, CT 06801

CONTACT

203-743-2508

DANBURY

Abbey Lane

ADDRESS

15 Abbey Lane
Danbury, CT 06810

CONTACT

203-798-0444

Brookview Commons

ADDRESS

30 Crosby St
Danbury, CT 06810

CONTACT

203-748-5100

Crown Point Apartments

ADDRESS

50 Saw Mill Rd
Danbury, CT 06810

CONTACT

203-743-9900

Mayfair Square

ADDRESS

71 Mayfair Square Road
Danbury, CT, 06810

CONTACT

844-861-2339

DARIEN

Avalon Bay

ADDRESS

137 Hollow Tree Ridge Road
Darien, CT 06820

CONTACT

475-234-2796

NORWALK

The Confluence Norwalk

ADDRESS

26 Belden Ave
Norwalk, CT 06850

CONTACT

866-205-2780

The Curb

ADDRESS

200 Glover Ave
Norwalk, CT 06850

CONTACT

203-355-6022

Merritt River Apartments

ADDRESS

399 Maine Ave
Norwalk, CT 06851

CONTACT

203-846-1100

One Glover Apartments

ADDRESS

1 Glover Ave
Norwalk, CT 06850

CONTACT

844-432-0323

STRATFORD	<p>Merion Stratford</p> <p>ADDRESS 1000 Avalon Way Stratford, CT 06614</p> <p>CONTACT 833-982-2612</p>	TRUMBULL	<p>The Royce at Trumbull</p> <p>ADDRESS 100 Avalon Gates Trumbull, CT 06611</p> <p>CONTACT 203-372-1600</p>
	<p>Allure - Harbor Point</p> <p>ADDRESS 850 Pacific St Stamford, CT 06902</p> <p>CONTACT 203-355-6022</p>		<p>Anthem - Harbor Point</p> <p>ADDRESS 2 Harbor Point Rd, S Stamford, CT 06902</p> <p>CONTACT 203-355-6022</p>
	<p>Escape - Harbor Point</p> <p>ADDRESS 880 Pacific St Stamford, CT 06902</p> <p>CONTACT 203-355-6022</p>		<p>Harbor Point Apartments</p> <p>ADDRESS 111 Towne Street Stamford, CT 06902</p> <p>CONTACT 888-564-2362</p>
STAMFORD	<p>Hoyt Bedford Apartments</p> <p>ADDRESS 112 Hoyt St Stamford, CT 06905</p> <p>CONTACT 203-533-2102</p>		<p>NV - Harbor Point</p> <p>ADDRESS 100-110 Commons Park N Stamford, CT 06901</p> <p>CONTACT 203-355-6022</p>
	<p>Opus - Harbor Point</p> <p>ADDRESS 900 Pacific St #223 Stamford, CT 06902</p> <p>CONTACT 203-355-6022</p>		<p>Park Place</p> <p>ADDRESS 101 Washington Blvd Stamford, CT 06902</p> <p>CONTACT 203-997-0522</p>
	<p>Postmark Apartments</p> <p>ADDRESS 301 Commons Park South, Stamford, CT 06902</p> <p>CONTACT 203-920-4747</p>		<p>Sleepy Hollow</p> <p>ADDRESS 5 Sixth Street Stamford, CT 06905</p> <p>CONTACT 203-968-2313 Ext. 100</p>

Corporate Apartments

FAIRFIELD COUNTY, CONT.

STAMFORD

Sofi Parc Grove

ADDRESS
200 Broad St
Stamford, CT 06901

CONTACT
203-403-0274

Stamford Corners

ADDRESS
1455 Washington Blvd
Stamford, CT 06902

CONTACT
203-989-3180

Vault Apartments

ADDRESS
120 Towne Street
Stamford, CT 06902

CONTACT
203-961-1200

HARTFORD COUNTY

AVON

Avon Place

ADDRESS
46 Avonwood Road
Avon, CT 06001

CONTACT
860-677-1196

BLOOMFIELD

The Royce at Trumbull

ADDRESS
2 Francis Way
Bloomfield, CT 06002

CONTACT
860-242-2354

EAST HARTFORD

Woodcliff Estates

ADDRESS
181 Nutmeg Lane
East Hartford, CT 06118

CONTACT
860-200-2337

FARMINGTON

Centennial Apartments

ADDRESS
5 Spring Lane
Farmington, CT 06032

CONTACT
860-677-4647

The Residences at 229

ADDRESS
299 Colt Hwy
Farmington, CT 06032

CONTACT
860-674-1299

HARTFORD COUNTY, CONT.

GLASTONBURY

Griswold Gardens**ADDRESS**

30 Salem Ct
Glastonbury, CT 06033

CONTACT

860-856-9315

The Tannery**ADDRESS**

917 New London Turnpike
Glastonbury, CT 06033

CONTACT

833-491-7860

HARTFORD

Clemens Place**ADDRESS**

16 Owen St
Hartford, CT 06105

CONTACT

860-237-4657

Hartford 21**ADDRESS**

221 Trumbull St
Hartford, CT 06103

CONTACT

833-822-2447

North Crossing**ADDRESS**

1212 Main St
Hartford, CT 06103

CONTACT

877-794-5811

Park Place Towers**ADDRESS**

24 Park Pl
Hartford, CT 06106

CONTACT

860-331-8445

Sage Allen**ADDRESS**

21 Temple St
Hartford, CT 06103

CONTACT

860-247-1889

MANCHESTER

The Pavilions**ADDRESS**

345 Buckland Hills Dr
Manchester, CT 06040

CONTACT

933-539-2537

Ribbon Mill Apartments**ADDRESS**

150 Pine St
Manchester, CT 06040

CONTACT

860-352-1974

NEW BRITAIN

Normandy Heights**ADDRESS**

395 Brittany Farms Rd
New Britain, CT 06053

CONTACT

860-223-3030

NEWINGTON

Bradford Commons**ADDRESS**

1570 Willard Ave
Newington, CT 06111

CONTACT

860-952-3947

Corporate Apartments

HARTFORD COUNTY, CONT.

ROCKY HILL

The Glenbrook at Rocky Hill

ADDRESS

100 Robinson Road
Rocky Hill, CT 06067

CONTACT

860-215-2237

WEST HARTFORD

Eagle Rock Apartments

ADDRESS

1248 Farmington Ave
West Hartford, CT 06107

CONTACT

860-352-5686

WINDSOR

Rivers Bend

ADDRESS

1 Phaeton St
Windsor, CT 06095

CONTACT

860-352-1184

NEW LONDON COUNTY

NEW LONDON

Courtview Square Apartments

ADDRESS

309 Crystal Ave
New London, CT 06320

CONTACT

860-215-3735

Harbortree Apartments

ADDRESS

151 Oneco Ave
New London, CT 06320

CONTACT

860-215-3743

Nutmeg Woods

ADDRESS

84 Hawthorne Drive North
New London, CT 06320

CONTACT

860-200-2563

Villages at Shore Landing

ADDRESS

5 Nob Hill Road
New London, CT, 06320

CONTACT

860-200-2691

GROTON

Groton Towers

ADDRESS

39 Broad Street Extension
Groton, CT, 06340

CONTACT

860-200-2427

NORWICH

Thamesview Apartments

ADDRESS

495 Laurel Hill Road
Norwich, CT 06360

CONTACT

860-889-3232

NEW HAVEN COUNTY

HAMDEN	Broadmoor ADDRESS 676 Mix Ave Hamden, CT 06514	CONTACT 203-287-1546	NORTH HAVEN	Ardenwood ADDRESS 100 Avalon Haven Dr North Haven, CT 06473	CONTACT 866-803-1862
	510 Main ADDRESS 510 Main St East Haven, CT 06512	CONTACT 203-439-5645		Parkside City Crossing ADDRESS 22 Gold Street New Haven, CT 06519	CONTACT 203-553-6275
NEW HAVEN	The Taft ADDRESS 265 College St New Haven, CT 06510	CONTACT 203-457-8693		Westville Village Apartments ADDRESS 400 Blake St New Haven, CT 06515	CONTACT 203-349-8498

Tax & Accounting Firms

CLA (CliftonLarsonAllen) **ADVANCECT MEMBER***

Wealth advisory, outsourcing, audit, tax, and consulting services

CONTACT

860-561-4000
29 South Main St
West Hartford, CT 06107

Deloitte LLP and subsidiaries **ADVANCECT MEMBER***

Audit, tax, financial advisory and consulting

CONTACT

860-725-3000
185 Asylum St
Hartford, CT 06103

Beers, Hamerman, Cohen & Burger, PC

Assurance services, tax planning and preparation, advisory, litigation support, financial statement preparation, trust and estate services

CONTACT

203-787-6527
234 Church St
New Haven, CT 06510

Budwitz & Meyerjack PC

Accounting, auditing and tax services for businesses, individuals and nonprofit organizations

CONTACT

860-677-4697
322 Main St
Farmington, CT 06032

Bengston & Smith, P.C

Business & individual tax planning and tax preparation, business valuation, estate & financial planning and administration, serve accounting and tax consulting needs of: professional practices, contractors, retailers, personal service businesses, and manufacturers.

CONTACT

806-678-5160
20 Waterside Dr #101
Farmington, CT 06032

Burzenski & Company

Management consulting services, business valuation, accounting, auditing, tax services, bookkeeping, virtual office support, financial forecasts & projections, wealth management

CONTACT

203-468-8133
100 S Shore Dr #100
East Haven, CT 06512

CohnReznick LLP

Accounting and auditing services including Sarbanes-Oxley/SEC/corporate governance, forensic and employee-benefit plans, tax planning and preparation, etc.

CONTACT

959-200-7000
350 Church St, 12th floor
Hartford, CT 06103

* AdvanceCT members are committed to promoting economic development in Connecticut.

Cowen Tax Advisory Group

Retirement, taxes, insurance, investments, life insurance, fixed indexed annuities, long term care insurance, medicare insurance planning, 401k rollover assistance, legal services.

CONTACT**860-676-1100**

433 S. Main St., Suite 310
West Hartford, CT 06110

Crowe LLP

Audit, tax, advisory services, consulting and applied technology

CONTACT**860-678-9200**

175 Powder Forest Drive
Simsbury, CT 06089

Ernst & Young

Considerations for inbound investment, audit, assurance and consulting services, federal, state and international tax, strategy and transaction advisory and due diligence, risk advisory

CONTACT**860-725-3000**

20 Church St
Hartford, CT 06103

FML LLP

Audit and assurance services, tax compliance and consulting, Sarbanes-Oxley and other business consulting services for public and private companies

CONTACT**860-657-3651**

300 Winding Brook Drive
Glastonbury, CT 06033

Genovese, Zdon & Associates, LLC

Tax, advice, bookkeeping & payroll, IRS tax help.

CONTACT**203-250-2075**

55 Realty Dr #310
Cheshire, CT 06410

Grant Thornton LLP

Accounting, audit, tax, advisory services

CONTACT**860-781-6700**

90 State House Square, 10th floor
Hartford, CT 06103

Gullmartin, DiPiro & Sokolowski LLC

Accounting, audit, business consulting, corporate, individual partnership, estate and gift-tax planning, and services to not-for-profits.

CONTACT**860-347-5689**

505 Main St
Middletown, CT 06457

Tax & Accounting Firms

Mahoney Sabol & Co. LLP

SEC, private company and municipal auditing, accounting, tax consulting and compliance, business and financial consulting, valuations, estate and trusts.

CONTACT

860-541-2000

180 Glastonbury Blvd, Suite 400
Glastonbury, CT 06033

Marcum LLP

Auditing (including SEC), compilations and review, compliance audits, corporate taxes, financial services, governmental, tax, mergers, public offerings, and tax representation.

CONTACT

860-760-0600

185 Asylum St, 25th floor
Hartford, CT 06103

MMNT Certified Public Accountants

Corporate tax services, audits, reviews, compilations, agreed-upon procedures, employee benefit plan audits, estate & trust services, nonprofit services, business valuation, Rent-A-CFO.

CONTACT

860-643-1001

160 Chapel Road Suite 301
Manchester, CT 06042

Nathan Accounting Group

Outsources accounting department, fractional CFO and controller services, cash flow management, payroll, HR & benefits, IT infrastructure, budgeting & forecasting, risk management.

CONTACT

860-677-5001

200 Fisher Drive
Avon, CT 06001

Palmer Latko Ledas Page

Business and tax planning, small business office services, business, individual, trust and nonprofit accounting, tax-return preparation, auditing and attest services, financial-statement preparation

CONTACT

860-677-1000

20 Tower Lane
Avon, CT 06001

PKF O'Connor Davies

Complete range of accounting, auditing, tax, and management advisory services

CONTACT

860-257-1870

100 Great Meadow Road
Wethersfield, CT 06109

RSM US

Key considerations for foreign investors in the United States. Assurance, tax and consulting services.

CONTACT

203-773-1909

225 Asylum Street, 23rd floor
Hartford, CT 06103

Tepplitzky & Company

Accounting services, bookkeeping, audits, reviews and compilation, business entity selection, business succession planning, estate planning, retirement planning, IRS representation, sales tax services, tax planning, tax preparation, mergers & acquisitions

CONTACT**203-387-0852**

One Bradley Road, Bldg 600
Woodbridge, CT 06525

UHY LLP

Tax planning and compliance, audit and assurance, business valuation

CONTACT**860-676-9020**

6 Executive Drive, Suite 111
Farmington, CT 06032

Whittlesey

Assurance and auditing, tax planning and consulting, advisory services, business valuations, healthcare consulting, technology consulting, and cybersecurity

CONTACT**860-522-3111**

280 Trumbull St, 24th floor
Hartford, CT 06103

Tech Consulting

CGI ADVANCECT MEMBER*

Business Consulting, Systems Integration, Managed IT Services, Application Services, Infrastructure Services, Business Process Services

HARTFORD

1 American Row, Suite 403
Hartford, CT 06102

cgi.com

HCLTech ADVANCECT MEMBER*

Application Support & Maintenance, Digital Consulting, Digital Applications & Platforms, Application Modernization & Integration, Data & Analytics, Software as a Service (SaaS), Enterprise Applications, Digital Foundation Consulting, Hybrid Cloud, Digital Workplace, Cybersecurity

HARTFORD

10 State House Square
Hartford, CT 06103

hcltech.com

Infosys ADVANCECT MEMBER*

Digital Marketing, Digital Commerce, Digital Interactions, Digital Workplace Services, Data Analytics and AI, Infosys Generative AI, Blockchain, Engineering Services, Internet of Things (IoT), Application Modernization, Salesforce, Service Experience Transformation, Cybersecurity

HARTFORD

225 Asylum St 11th floor
Hartford, CT 06103

infosys.com

ADNET Technologies

Remote IT Support, Server Monitoring, Desktop Monitoring & Management, Backup & Disaster Recovery, Network Monitoring & Management, Firewall Monitoring & Management, Cloud Migration, Cloud Management, Microsoft Office 365 Services, Security Assessments & Testing

ROCKY HILL

400 Capital Blvd, Suite 101
Rocky Hill, CT 06067

thinkadnet.com

Charles IT

Backup & Disaster Recovery, Public Cloud, Private Cloud, VoIP, Email Solutions

MIDDLETOWN

150 William St
Middletown, CT 06457

charlesit.com

Crowe LLP

Process Optimization & Automation, Public Company Readiness, Business Process Outsourcing, Sox Compliance, Platform Implementation & Enhancement, Digital & Cybersecurity

WEST HARTFORD

62 Memorial Rd #100
West Hartford, CT 06107

crowe.com

Flagship Networks Inc.

Managed services, IT Consulting, Security, Cloud Solutions, Disaster Recovery, IT Procurement

SHELTON

100 Beard Sawmill Rd #340
Shelton, CT 06484

flagshipnetworks.com

* AdvanceCT members are committed to promoting economic development in Connecticut.

NSI

Managed IT support, Co-Managed IT, Cyber Security Services, Cyber Security Assessment

NAUGATUCK

191 Church St
Naugatuck, CT 06770

nsiserv.com

Public Consulting Group

Strategy, Architecture, Planning and Procurement, Business Enablement, Business Solutions, Project Assurance

WINDSOR

7 Waterside Crossing
Windsor, CT 06095

publicconsultinggroup.com

Sila Solutions Group

Strategy and Transformation, Data Analytics, Digital and Creative, Integrated Risk Management, Software Engineering and Integration

SHELTON

2 Enterprise Dr #508
Shelton, CT 06484

silasg.com

The TNS Group

Managed IT services, Business Continuity, Cloud Managed Services, IT Consulting, Managed VOIP

STAMFORD

3 Landmark Square, Suite 600
Stamford, CT 06901

thetnsgroup.com

The Walker Group

Fully Managed IT Services, Managed Security for Workstations & Servers, Network Support Services, Managed Firewall, Backup & Disaster Recovery, Remote Monitoring, Cybersecurity, Security Assessments, Compliancy, Microsoft 365 Implementation & Consulting, Hardware/Software

FARMINGTON

20 Waterside Dr
Farmington, CT 06032

thewalkergroup.com

Zohdi Tech

Agile Transformation & Coaching, Scaled Agiled Training & Workshops, Project Management, Digital Strategies for Small Businesses, CRM & Marketing Optimization, Staff Augmentation & Outsourcing

WEST HARTFORD

zohditech.com

Law Firms

Pullman & Comley LLC**ADVANCECT MEMBER***

Alternative dispute resolution, bankruptcy, creditors' rights and financial restructuring, business and finance, education, environmental, family law, government finance, health care; labor, employment, municipal, property tax and valuation, school law, trusts and estates, real estate

CONTACT

860-424-4300
90 State House Square
Hartford, CT 06103

Axinn

Antitrust, intellectual property and high-stakes litigation

CONTACT

860-275-8100
90 State House Square
Hartford, CT 06103

Aeton Law Partners

Business litigation, business law and transactions, employment, litigation & trial, personal injury, criminal defense

CONTACT

860-785-2099
311 Centerpoint Drive
Middletown, CT 06457

Cantor Colburn LLP

Intellectual property, litigation, patents, transactions and licensing, trademarks, copyrights

CONTACT

860-286-2929
20 Church St., 22nd Floor
Hartford, CT 06103

Conway Stoughton

Civil litigation, insurance defense, products liability, workers compensation, subrogation, alternative dispute resolution

CONTACT

860-523-8000
641 Farmington Ave.
Hartford, CT 06105

Cummings & Lockwood LLC

Private clients group, family office and closely held business group, corporate & finance group, litigation group, commercial real estate group

CONTACT

203-327-1700
6 Landmark Square
Stamford, CT 06901

Day Pitney LLP

Employment, environmental, trusts, estates and wealth planning, insurance, public securities and finance, family office and private equity, health care, real estate, government enforcement, creditors' rights, professional liability

CONTACT

860-275-0100
242 Trumbull St.
Hartford, CT 06103

* AdvanceCT members are committed to promoting economic development in Connecticut.

Finn Dixon & Herling

Debt Financing, Executive Compensation, Benefits & Employment, Hedge Funds / Private Equity Funds, International Practice, Investment Advisers & Broker-Dealers, Mergers & Acquisitions, Private Equity & Venture Capital, Securities & Public Companies, Tax

CONTACT

800-826-3579
6 Landmark Square
Stamford, CT 06901

Halloran Sage

Banking, bankruptcy, commercial finance, construction, criminal defense, cybersecurity, energy and utilities, environmental and land use, health care, insurance, labor, municipal, real estate, transportation, etc.

CONTACT

860-522-6103
225 Asylum St.
Hartford, CT 06103

Hinckley Allen

Bankruptcy, cannabis, construction, corporate, education, employee benefits, energy, environmental, finance, government investigations, health care, intellectual property, labor and employment, land use, litigation, M&A, public finance, real estate

CONTACT

860-725-6200
20 Church St.
Hartford, CT 06103

Holland & Knight LLP

Corporate transactions and finance, intellectual property, international business and trade, employment and benefits, Latin America, real estate, regulatory and government affairs, tax, executive compensation and benefits, technology and cybersecurity

CONTACT

203-905-4500
263 Tresser Blvd #1400
Stamford, CT 06901

Howd & Ludorf LLC

Municipal/public entity, civil rights, products liability, asbestos defense, insurance defense, insurance coverage, toxic tort, workers' compensation, employment, appeals

CONTACT

860-249-1361
65 Wethersfield Ave.
Hartford, CT 06114

Jackson Lewis PC

Labor and employment law

CONTACT

860-522-0404
90 State House Square, 8th Floor
Hartford, CT 06103

McCarter & English LLP

Commercial litigation, commercial real estate, corporate, employment, environmental, intellectual property, life sciences, product liability, immigration, information technology

CONTACT

860-275-6700
CityPlace 1, 185 Asylum St.
Hartford, CT 06103

Law Firms

McElroy, Deutsch, Mulvaney & Carpenter LLP

Private equity, employment, environmental, construction, commercial, labor, alternative dispute resolution, business services, real estate finance, corporate reorganization and bankruptcy, government and administration

CONTACT**860-522-5175**

1 State St., 14th Floor
Hartford, CT 06103

Morgan, Lewis & Bockius LLP

Corporate, finance, restructuring, employment and benefits

CONTACT**860-240-2700**

1 State St.
Hartford, CT 06103

Morrison Mahoney LLP

Products liability, transportation, construction, workers' compensation, professional and medical malpractice and insurance litigation as well as business counseling and advice

CONTACT**860-616-4441**

1 Constitution Plaza, 10th Floor
Hartford, CT 06103

Murtha Cullina LLP

Appellate, bankruptcy, business/finance, community banking, construction, education, energy/environmental, healthcare, immigration, IP, labor/employment, litigation, municipal, privacy/cybersecurity, real estate, retail, tax-exempt, trusts/estates

CONTACT**860-240-6000**

280 Trumbull Street
Hartford, CT 06103

Reid & Riege PC

Commercial real estate, employee benefits and pension, environmental, health care, trusts and estates, insolvency and bankruptcy, multi-employer benefit plans, nonprofit organizations

CONTACT**860-278-1150**

1 Financial Plaza
Hartford, CT 06103

Robinson & Cole, Business Structuring

Insurance & reinsurance, labor and employment, environmental, energy & utilities, business transactions, bankruptcy & reorganizations, finance, public finance, health care, immigration, tax-exempt organizations, land use, real estate, construction, IP

CONTACT**800-826-3579**

280 Trumbull Street
Hartford, CT 06103

Rogin Nassau LLC

Environmental, bankruptcy and reorganization, business, corporate and commercial, health care, labor and employment, dispute resolution, trust and estates, real estate, land use, tax

CONTACT**860-256-6300**

185 Asylum St.
Hartford, CT 06103

Shipman & Goodwin LLP

Labor, employment, environmental, bankruptcy, creditors' rights, business, finance, data privacy and protection, education, tax, government investigations, criminal defense, state attorneys general, health care, insurance

CONTACT**860-251-5000**

One Constitution Plaza
Hartford CT, 06103

Udike, Kelly & Spellacy P.C.

Employment, environmental, affordable housing, health care, venture capital, private equity, technology, energy and utilities, bankruptcy, creditor's rights, data security and privacy, third-party investigations, dispute resolution

CONTACT**860-548-2600**

100 Pearl St., 17th Floor
Hartford, CT 06103

Verrill Dana LLP

Business law, employee benefits & executive compensation, employment & labor, environmental & land use, government & public relations, health care & life sciences, individuals & families, intellectual property, litigation & trial, real estate, white collar defense & government enforcement

CONTACT**203-222-0885**

355 Riverside Avenue
Westport, CT 06880

Wiggin and Dana LLP

Litigation and regulatory compliance, health care, labor, employment and benefits, corporate, private client services, real estate, environmental, construction and facilities

CONTACT**203-498-4400**

23 Woodland Road, Unit B1
Madison, CT 06443

Executive Search Firms

Averity

STAMFORD

Software Engineering, Data Science, Data Engineering, DevOps, Security

CONTACT

646-519-2665

680 E Main St #671
Stamford, CT 06901

Benchmark IT

STAMFORD

Software and Web Development, Infrastructure, Business Analysis, Database Engineering, Project/Program Management, Executive and Tech Management, Quality Assurance, Security

CONTACT

203-304-5500

2777 Summer St, 3rd Floor
Stamford, CT 06905

Crossroads Consulting, LLC

MONROE

Accounting, Administrative & Clerical, Creative, Engineering & Technical, Finance, Legal, Medical & Science, Sales

CONTACT

203-459-9969

272 Fan Hill Rd
Monroe, CT 06468

Ed-Exec, Inc.

GLASTONBURY

Education, Universities, OPM, Career Schools, Continuing ED, Colleges, K-12, Online Education, Coding Bootcamps

CONTACT

860-781-7641

20 Western Blvd
Glastonbury, CT 06033

Excel Partners

NORWALK

Accounting/Finance, Admin/Office Services, Customer Service/Call Center, Financial Services, Human Resources

CONTACT

203-978-6200

535 Connecticut Ave
Norwalk, CT 06854

Fogarty, Knapp & Assoc

STAMFORD

Executive and Administrative Assistants, Office Management, Human Resources, Paralegals and Legal Administrative Assistants

CONTACT

203-965-7777

1150 Summer St
Stamford CT 06905

Hobson Associates

CHESHIRE

Life Sciences, Technology, Industrial and Manufacturing, Insurance, Renewable and Clean Energy, Staffing Services

CONTACT

203-272-0227

1781 Highland Ave # 201
Cheshire, CT 06410

J. Morrissey & Company**WINDSOR**

Accounting & Finance, Executive-Level, Healthcare, Information Technology, Office Support

CONTACT

860-925-6000

289 Broad St
Windsor, CT 06095

Kaiser Whitney Staffing**NEW HAVEN**

Accounting/Finance, Biotech, Human Resources/Office Management, Sales and Marketing, Engineering, Logistics and Transportation, International, Connecticut Legal Staffing

CONTACT

203-562-0511

59 Elm St Suite 520
New Haven, CT 06510

RJS Associates Inc**HARTFORD**

Engineering & Manufacturing, Sales & Marketing, Healthcare Services, Information Technology, Pharmaceutical Scientific, Civil/Environmental Engineering, Accounting & Finance, Human Resources & Operations, Purchasing

CONTACT

860-278-5840

10 Columbus Blvd #19
Hartford, CT 06106

Robert Half Recruiters & Employment Agency**SHELTON**

Finance & Accounting, Administrative & Customer Support, Technology, Marketing & Creative, Legal

CONTACT

203-909-6258

2 Corporate Dr Suite 750
Shelton, CT 06484

Smith Arnold Partners, LLC**STAMFORD**

Finance & Accounting, Technology, Healthcare

CONTACT

203-967-8300

3 Landmark Square
Stamford, CT 06901

Smith Hanley Associates LLC**SOUTHPORT**

Data Science/Analytics, Actuarial Science, Pharmaceutical, Market Research & Consumer Insights, Financial Strategies

CONTACT

203-319-4300

107 John St Suite 201
Southport, CT 06890

Vaco**SHELTON**

Technology, Accounting & Finance, Operations

CONTACT

203-909-0634

2 Trap Falls Rd #314
Shelton, CT 06484

Staffing Firms

Aerotek

aerotek.com

Expertise, Industries, Specializations, Staffing Services, Vendor On-Premise, Comprehensive Maintenance Services, Construction, Support Services

HAMDEN | FARMINGTON | STAMFORD

A. R. Mazzotta Employment Specialists

armazzotta.com

Request An Employee, Direct Hire Recruitment, Temporary Staffing/Contract Staffing, Temp-To-Hire, Job Posting/Resume Screening Services, Skill Assessments, Career Placement

MIDDLETOWN | WALLINGFORD | WESTBROOK | THOMASTON

Kaiser Whitney Staffing

kaiserwhitney.com

Temporary Office Support, Connecticut Legal Staffing, Professional Search Division, Screening and Testing Procedures, Large Candidate Data Base

NEW HAVEN

Excel Partners

excel-partners.com

Direct-Hire Recruitment, Contract Staffing, Payroll Outsourcing, New Venture & Startups, Contract-To-Hire Staffing, Background Evaluations, The Excel Advantage, Job Description Builder

NORWALK

Express Employment Professionals

expresspros.com

Workforce Solutions, Skilled Trades, Office Services, Professional Staffing, Candidate Recruitment Process, Workforce Management Tools, Employer Resources, Turnover Calculator, Webinars, Healthcare

NORTH HAVEN | FAIRFIELD | MERIDEN | SHELTON | EAST HARTFORD | WATERBURY | TORRINGTON | WINDSOR | DANBURY

Insight Global

insightglobal.com

Staffing Services, Evergreen Managed Services, Compass Culture Consulting, Diversity, Equity, & Inclusion

HARTFORD | STAMFORD

JMR Staffing

jmrstaffing.com

Industry-Specific Recruitment Solutions, Temp-To-Hire, Payrolling, Direct Hire, Contracted, Flexible Staffing, Customized Options

MERIDEN | EAST HARTFORD

Mackin Talent Hartford

mackintalent.com

Direct Hire & Executive Search, Virtual Bench & Remote Workers, Workforce Planning, Recruitment & Onboarding, SOW Managed Services, Diversity & Inclusion Programs, Employee Onboarding, Succession Planning, Talent Retention Plans

MERIDEN | EAST HARTFORD

PrideStaff

pridestaff.com

Temporary Staffing, Contract Staffing, Temp-To-Hire Staffing, Direct Hire Recruitment Services

ROCKY HILL

Reitman Personnel

reitmanpersonnel.com

Human Resources & Management Consultations, Reference Checks, Credit & Criminal Checks, Job Placement, Temp & Temp-To-Hire, Professional Search/Direct Hire, Reitman Security Search, Reitman Management & Leadership Institute

BRANFORD

Robert Half Talent Solutions

roberthalf.com

Remote Hiring, Contract Talent Solutions, Permanent Placement, Managed Solutions, Job Search Resources

HARTFORD | NEW HAVEN | SHELTON | DANBURY | STAMFORD

Ultimate Staffing Services

ultimatestaffing.com

Temporary, Temporary-to-Hire, Direct Hire, On-Premise, VMS and MSP large-scale staffing solutions

NEW HAVEN | HARTFORD | STAMFORD

Industry Organizations

Aerospace Components Manufacturers

MANUFACTURING | EAST HARTFORD

Attracts the global aerospace industry to The World's Aerospace Alley!®, where ACM member firms form a unique industrial cooperative of long-established aerospace manufacturers, processors and suppliers, offering a cost-effective supply chain.

aerospacecomponents.org

BioCT

LIFE SCIENCES | NEW HAVEN

Catalyze and accelerate growth in the life sciences with the goal of improving human health by fostering a rich, innovative ecosystem and promoting Connecticut as a preferred destination for life science exploration and innovation.

bioct.org

Connecticut Brewers Guild

FOOD & BEVERAGE | NEW HAVEN

Promotes the interest of the craft beer industry throughout the state of Connecticut.

connecticut.beer

Connecticut Cannabis Chamber of Commerce

AGRICULTURE | ROCKY HILL

Promotes sensible policy, responsible growth, and the development of Connecticut's cannabis industry.

ctcannabischamber.org

Connecticut Hydrogen-Fuel Cell Coalition

ENERGY | EAST HARTFORD

Works to enhance economic growth in Connecticut through the development, manufacture, and deployment of fuel cell and hydrogen technologies and associated fueling systems.

chfcc.org

Connecticut Restaurant Association

HOSPITALITY | HARTFORD

Advocates for the Connecticut restaurant industry, a hub for information and a platform for networking.

ctrestaurant.org

Connecticut Technology Council

TECH | EAST HARTFORD

Gives a voice to all technology companies by creating a platform for sharing ideas and resources. It is a hub that brings together the state's tech community, public sector, and service providers to network and help grow the tech sector in Connecticut.

ct.org

CT Insurance and Financial Services (CT IFS)

INSURANCE & FINANCE | HARTFORD

Strengthen and advance the insurance and financial services industry in Connecticut.

connecticutifs.com

Eastern Advanced Manufacturing Alliance

MANUFACTURING | FRANKLIN

Strengthening the regional advanced manufacturing industry by harnessing the collective energy of regional manufacturers through advocacy, workforce & education development, and career awareness.

eamainc.com

Energize Connecticut

ENERGY | NORTH HAVEN

Helps you save energy in your Connecticut home or business with rebates, financing and services for energy efficiency and clean energy improvements.

energizect.com

Hartford InsurTech Hub

TECH | HARTFORD

A collaboration of Insurance Carriers, City of Hartford Representatives and Community Stakeholders all focused on industry evolution through collaboration and innovation.

hartfordinsurtechhub.com

ManufactureCT

MANUFACTURING | HARTFORD

A statewide forum for community and business leaders focused on sharing perspectives from inside manufacturing facilities to build collective strength for the sector.

manufacturect.org

Industry Organizations

Naval & Maritime Consortium

MANUFACTURING | GROTON

An active network of member companies, community partners, and OEMs that collaborates to develop opportunities within the growing Blue Tech industrial sector. Focuses on Naval submarine shipbuilding and offshore wind supply chains around New England.

navalandmaritimeconsortium.com

New England Spring & Metalstamping Association

MANUFACTURING | BRISTOL

NESMA provides a powerful voice for the people of the Spring and Metalstamping industry, advocating for policies that help local manufacturers remain competitive and providing education, workforce training, networking, and other community events.

nesma-usa.com

Northeast Energy Efficiency Council

ENERGY | BOSTON

Through state-level advocacy, NEEC helps to secure the policies, budgets, and resources necessary for a vibrant and growing energy efficiency industry.

neec.org

Renewable Energy and Efficiency Business Association (REEBA)

ENERGY | WEST HARTFORD

Promotes the sustainable deployment of renewable energy and energy efficiency in Connecticut

linkedin.com/company/renewable-energy-and-iciency-business-association-reeba/about/

Smaller Manufacturers Association

MANUFACTURING | WATERBURY

Can help attract talent, connect with both suppliers and customers, and can help you be heard by legislators in Hartford.

sma-ct.com

Sustainable CT

SUSTAINABILITY | WILLIMANTIC

Sustainable CT provides a shared vision, an action road map, practical tools, multiple benefits, and collaborative spirit to build a thriving Connecticut for all residents

sustainablect.org

Support for Life Sciences

BioLabs

BioLabs specializes in managing co-working space for life science startups. The New Haven incubator was designed to be the premier place in which to test, develop and grow game changing ideas. The interim space at Yale West Campus will provide an early home for local entrepreneurs to kick-start their companies in Connecticut. Their permanent space at 101 College is expected to welcome companies in early 2024.

biolabs.io/new-haven

Aon

Life Sciences companies face numerous and unique challenges as they evolve. Identifying and mitigating these risks can be the fundamental difference between financial success and business failure. Aon provides Life Sciences companies with end-to-end risk solutions, supporting organizations from the initial discovery phase to final product launch.

aon.com

101 College Street

Currently under development and nearing completion: 101 College will provide an active civic space on the ground floor that opens onto an exterior public plaza. In addition to Yale's early initial commitment to the project, Arvinas, Inc., a clinical-stage biotechnology company with roots at the university, has also agreed to lease three floors.



FOR ADDITIONAL ASSISTANCE, CONTACT:

Tim Miller

Director, Business Development, Life Sciences
AdvanceCT

tmiller@advancect.org | 860-571-6201

Small Business Registration



Registering Your Small Business

Business.CT.gov is your one stop for doing business in Connecticut, whether you are looking to start a business or need resources for an existing one. Starting and registering your business has never been easier – just visit **Business.CT.gov/Start/Registering-Your-Business**. From there, you can complete the state’s New Business Checklist to ensure that you have all the information necessary to register your business. You will need:

- A business name (complete a name reservation)
- Your business street address
- Your business NAICS code
- A business email address
- The name of your business agent

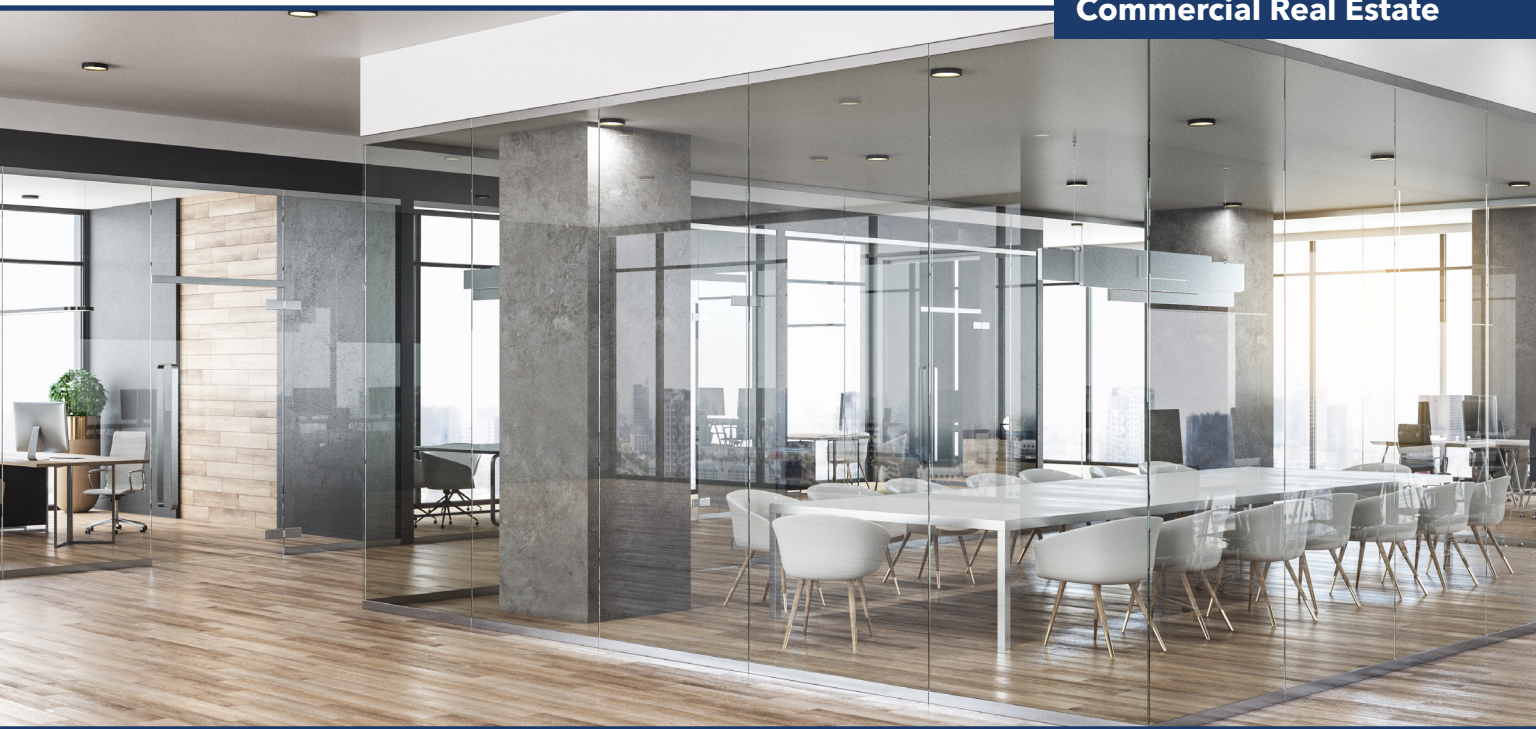
The site also provides tools to check on the availability of your business name, find your NAICS code, and choose a business structure. Once registration is completed, you can get assistance with licensing and permits, business filings, tax guidelines and support, and other small business tools.

FOR ADDITIONAL ASSISTANCE, CONTACT:

Sheila Hummel

Business Development Program Manager, Office of Small Business and Community Development Program
Office of Business Development, **Connecticut Department of Economic & Community Development (DECD)**
sheila.hummel@ct.gov | 860-500-2405

Commercial Real Estate



Commercial Real Estate

The commercial real estate market in Connecticut features options from redeveloped industrial sites to newly constructed class A office accommodations. For new construction, the state offers a range of greenfield and redevelopment sites, some of which are eligible for grants and incentives.

Cities such as Bridgeport, Stamford, New Haven, and Hartford offer geographic advantages, with Stamford being the closest city to New York and New London and Hartford being the closest to Boston. Incoming companies have office options that are close to their key target markets.

CLASS A OFFICE RENTAL COSTS* PER SQ FT

New Haven, CT **\$22.30**

Hartford, CT **\$22.39**

Stamford, CT
(Fairfield County) **\$37.39**

Boston, MA **\$46.36**

New York, NY
(Midtown) **\$83.77**

(Source: Cushman & Wakefield MarketBeat, Asking Rents, Q1 2023)

* Asking rates

FOR ADDITIONAL ASSISTANCE, CONTACT:

Erron Smith

Director, Business Development

AdvanceCT

esmith@advancect.org | 860-571-7139

**SEARCH LISTINGS ON CT SITEFINDER AT
ADVANCECT.ORG**

Counties & Cities



FAIRFIELD COUNTY

- 1 BRIDGEPORT
- 2 DANBURY
- 3 DARIEN
- 4 FAIRFIELD/SOUTHPORT
- 5 GREENWICH
- 6 MONROE
- 7 NORWALK
- 8 SHELTON
- 9 STAMFORD
- 10 STRATFORD
- 11 TRUMBULL
- 12 WESTPORT

NEW HAVEN COUNTY

- 13 BRANFORD
- 14 CHESHIRE
- 15 HAMDEN
- 16 MERIDEN
- 17 NEW HAVEN
- 18 NORTH HAVEN
- 19 WALLINGFORD
- 20 WATERBURY

MIDDLESEX COUNTY

- 21 CROMWELL
- 22 MIDDLETOWN

HARTFORD COUNTY

- 23 AVON
- 24 BLOOMFIELD
- 25 EAST HARTFORD
- 26 FARMINGTON
- 27 GLASTONBURY
- 28 HARTFORD
- 29 MANCHESTER
- 30 NEW BRITAIN
- 31 NEWINGTON
- 32 ROCKY HILL
- 33 SIMSBURY
- 34 WEST HARTFORD
- 35 WETHERSFIELD
- 36 WINDSOR

TOLLAND COUNTY

- 37 STORRS
- 38 TOLLAND

NEW LONDON COUNTY

- 39 GROTON
- 40 NEW LONDON
- 41 NORWICH



FOR MORE INFORMATION, CONTACT:

Erron Smith
Director, Business Development
860-571-7139
esmith@advancect.org

Ted Fisher
**Director, Business Development,
Advanced Manufacturing**
860-571-6210
tfisher@advancect.org

Tim Miller
**Director, Business Development,
Life Sciences**
860-571-6201
tmiller@advancect.org

Francesco Ricigliano
Senior Associate, Business Development
860-571-7146
fricigliano@advancect.org